



TITAN[®] TOWER

SELF-SUPPORT

Canadian Version



Trylon

www.trylon.com



The Titan tower has been a favourite in light duty applications for more than 30 years. With more than 15,000 Titan towers installed in North America, this model has been used for telemetry, satellite TV, wireless LAN, wireless Internet, mobile radio and amateur applications.

The Titan is a versatile, modular, pre-engineered tower that requires a minimal footprint and is available in heights ranging from 4.8 to 29m (16 to 96 feet).

TITAN SPECIFICATIONS

- Self-Support (free-standing)
- 45" face width
- "Survival" Tower Line
- Maximum height at minimum cost
- Ships assembled in 8ft sections to minimize installation and assembly time
- Ships nested to minimize freight cost
- Maximum height: 96ft
- Section height: 8ft

TITAN APPLICATIONS

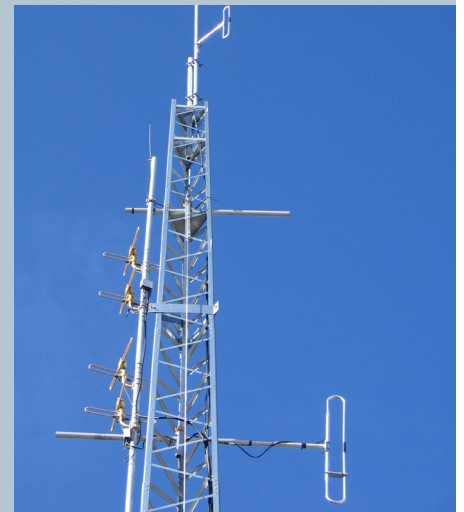
- Ideal for SCADA/remote monitoring
- Two-Way radio
 - EMS, Police, Fire, etc.
 - Companies with personal fleets (trucking companies etc.)
- Wireless Internet Service Providers (WISP)
- Surveillance applications
 - Camera towers

THE TITAN DIFFERENCE

- Maximum height, minimum cost Self-Support option
- Tower ships assembled
- 96ft tower ships on one skid



Titan tower - 80ft T400 model



Typical antenna install on a Titan tower



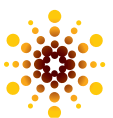
Tower ships nested to minimize freight



TITAN WIND LOAD CHARTS

		Allowable antenna area in ft ² at 70/85/100mph - Survival - 1/2" ice (round)		
HEIGHT	MODEL	70	85	100
16'	T200	2	-	-
16'	T300	3	-	-
16'	T400	10	-	-
16'	T500	24	1	-
16'	T600	36	6	-
16'	T700	60	18	2
16'	T800	80	32	6
24'	T200	2	-	-
24'	T300	3	-	-
24'	T400	10	-	-
24'	T500	24	1	-
24'	T600	36	6	-
24'	T700	60	18	2
24'	T800	80	32	6
32'	T200	2	-	-
32'	T300	3	-	-
32'	T400	10	-	-
32'	T500	24	1	-
32'	T600	36	6	-
32'	T700	60	18	2
32'	T800	80	32	6
40'	T200	2	-	-
40'	T300	3	-	-
40'	T400	10	-	-
40'	T500	24	1	-
40'	T600	36	6	-
40'	T700	60	18	2
40'	T800	80	32	6

		Allowable antenna area in ft ² at 70/85/100mph - Survival - 1/2" ice (round)		
HEIGHT	MODEL	70	85	100
48'	T200	2	-	-
48'	T300	3	-	-
48'	T400	10	-	-
48'	T500	24	1	-
48'	T600	36	6	-
48'	T700	60	18	2
48'	T800	80	32	6
56'	T200	2	-	-
56'	T300	3	-	-
56'	T400	10	-	-
56'	T500	24	1	-
56'	T600	36	6	-
56'	T700	60	18	2
64'	T200	2	-	-
64'	T300	3	-	-
64'	T400	10	-	-
64'	T500	24	1	-
64'	T600	36	6	-
72'	T200	2	-	-
72'	T300	3	-	-
72'	T400	10	-	-
72'	T500	24	1	-
80'	T200	2	-	-
80'	T300	3	-	-
80'	T400	10	-	-
88'	T200	2	-	-
88'	T300	3	-	-
96'	T200	2	-	-



Trylon

Please note: The Titan tower does not conform to CSA-S37-01 Standard. P.Eng. drawings are not available.



TRYLON®

21 South Field Drive, Elmira, ON N3B 0A6

Phone: (519) 669-5421

Fax: (519) 669-8912

www.trylon.com

StockProducts@trylon.com

TM, ®, ©, LOGOS, STYLIZED NAMES ARE TRADEMARKS OF TRYLON
MANUFACTURING COMPANY LTD. © 2013 PRINTED IN CANADA



www.trylon.com